

[TROUBLE VIEWING?](#) Click Here to view the Promo card on the web

[SIGN-UP NOW!](#) Click to become a Member for Free!



Ditch The Box Archives Available

**June 8th 2016: Encore: Medical Marijuana
Packaging: Why It Matters**

Joining us today is Rebecca O'Connor from Pinnacle Consultation. Pinnacle Consultation has expertise in all stages of marijuana business creation, including structuring, the application process, state compliance hiring and training and financial estimation. Today's topics include medical and recreational marijuana centers to have compliance packaging for their customers/patients, the need for medical marijuana packaging to be both child proof but senior friendly, and a checklist for the Colorado Marijuana Enforcement Division exit packaging requirements for marijuana dispensaries to follow. T

Tune in

Archives Available on
VoiceAmerica Variety Channel

[EPISODE ON DEMAND](#)

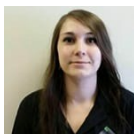
[VIEW HOST PAGE](#)

[Read more](#)

[DOWNLOAD PDF](#)

[GET CODE](#)

Featured Guest



Rebecca O'Connor

As a native of Colorado, Rebecca has been working in the marijuana industry for the past 4 years. Combining experience in the marijuana industry

[Read more](#)

Share This Episode

[Share On Facebook](#)

[Share On Twitter](#)

[Share On LinkedIn](#)

Connect with VoiceAmerica

Download our mobile apps



Read what our hosts are writing about.

[VOICEAMERICA BLOG](#)