



GETTING IN: A COLLEGE COACH CONVERSATION

with Elizabeth Heaton



Getting In: A College Coach Conversation
Thursday at 1 PM Pacific
April 12th 2018: Creating a College List; Waitlists from the College Perspective

There are two important parts of every college lists: finding the best fit colleges where the student can get in and pay for. We'll devote two segments to those ideas this week, focusing on how to get started on the list and how to incorporate the paying angle into the search process. We're doing another segment on waitlists in Office Hours, this time from the perspective of the colleges. We'll share how they use waitlists and what that means for students who currently have waitlist decisions from one or more colleges.

Tune in

Thursday at 1 PM Pacific Time
on VoiceAmerica Variety Channel

[LISTEN LIVE](#)

[EPISODE ON DEMAND](#)

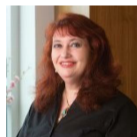
[VIEW HOST PAGE](#)

Questions? Comments?
Call In Live!

Toll Free: 1-866-472-5788
Intl: 001-480-398-1394

[SHARE](#) [DOWNLOAD PDF](#) [GET CODE](#)

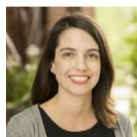
Featured Guests



Julia Jones

Julia Jones has been working with adolescents and college admissions for most of her career. She was involved in virtually all aspects of the admissions process at Brandeis University, including overseeing the creation and production of admissions publications and recruitment materials and serving as director of the Brandeis Alumni Admissions Council, a 1000member network of alumni recruiters and interviewers. During her tenure at Brandeis, Julia also was a member of the New England Association of College Admission Counseling NEACAC and served on the planning committees for three NEACAC annual conferences. More recently, she continued to work with high school students and their families as

[Read more](#)



Emily Toffelmire

Emily Toffelmire brings to College Coach years of experience in both secondary and post-secondary education. She was a high school counselor in public schools in Nevada and California, as well as at an independent school in Thailand, where she helped students apply to colleges on four continents. She moved on to admissions at the University of Southern California, where she spent her first two years as an assistant director, recruiting and evaluating freshmen and transfer applicants from Washington and California. She then served as a senior assistant director of admission for the USC Dornsife College of Letters, Arts and Sciences, overseeing the merit scholarship selection process and prese

[Read more](#)



Kathy Ruby

With a career that has spanned numerous colleges and universities, Kathy Ruby offers College Coach students and families a thorough knowledge of the college finance landscape. Most recently assistant vice president of enrollment and dean of student financial aid at St. Olaf College, Kathy has extensive experience counseling families on financial aid applications

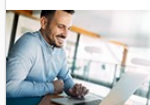
[Read more](#)

Share This Episode

[Share On Facebook](#) [Share On Twitter](#) [Share On LinkedIn](#)

Connect with VoiceAmerica

Download our mobile apps



Read what our hosts are writing about.

[VOICEAMERICA BLOG](#)