

[TROUBLE VIEWING?](#) Click Here to view the Promo card on the web

[SIGN-UP NOW!](#) Click to become a Member for Free!



**Finding Your Frequency**  
Live Shows Friday at Noon Pacific with  
Minisodes on Mondays and Wednesdays  
**October 29th 2021: Encore: What is your carbon  
footprint?**

Have you thought about how much your companies carbon footprint is? We will talk about how technology, like AI, and machine learning can provide some great data. We talk with Tara Gupta, Founder of Map-Collective, which uses data to track carbon footprints. Tara Gupta has been developing solid climate solutions since 2014, working creatively through film, community design, agriculture, social design, real estate, and technology.

#### Tune in

Live Shows Friday at Noon  
Pacific Time with Minisodes on  
Mondays and Wednesdays

[LISTEN LIVE](#)

[EPISODE ON DEMAND](#)

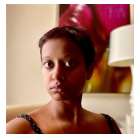
[VIEW HOST PAGE](#)

Questions? Comments?  
Call In Live!

Toll Free: 1-866-472-5788  
Intl: 001-480-398-1394

[SHARE](#) [DOWNLOAD PDF](#) [GET CODE](#)

#### Featured Guest



#### Tara Gupta

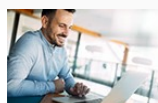
Tara Gupta is a climate activist, research-based artist, social entrepreneur, and the founder and CEO of Map-Collective. As a graduate of the Rhode Island School of Design and Georgetown University McDonough School of business, her background ranges from scientific research to system design and green urbanism. Gupta has been developing solid climate solutions since 2014, working creatively through film, community design, agriculture, social design, real estate, and technology. Through her diligent work in climate change awareness, Gupta founded the company Map-Collective, which uses data to track carbon footprints, in 2018.

[Read more](#)

#### Share This Episode

[Share On Facebook](#) [Share On Twitter](#) [Share On LinkedIn](#)

#### Connect with VoiceAmerica



Read what our hosts are writing about.

