

[TROUBLE VIEWING?](#) Click Here to view the Promo card on the web

[SIGN-UP NOW!](#) [SIGN-UP NOW!](#) Click to become a Member for Free!



Moir's Environmental Dialogues

Archives Available

March 9th 2017: **Saving the Loxahatchee National Wildlife Refuge**

Rolf Olson, Refuge Manager, Mark Musaus, former Refuge Manager, and Elinor Williams, president, Friends talk with Rob. The Loxahatchee is an awesome threshold brimming with wildlife between Lake Okeechobee, agricultural lands, and pine flatwoods to the north and the Everglades to the south, partially bounded by the largest remaining remnant of a cypress strand. An invasive plant, Old World climbing fern, is smothering about 72% of the Refuge. This tenacious vine with 100-foot-long tendrils kills plants by either blocking out light or by causing trees and other native plants to collapse un

[Read more](#)



Tune in

Archives Available on VoiceAmerica Variety Channel

[EPISODE ON DEMAND](#)

[VIEW HOST PAGE](#)

Featured Guests



Rolf Olson

Rolf Olson is Refuge Manager of the Loxahatchee NWR, Palm Beach County, FL.

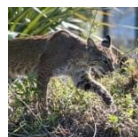
[Read more](#)



Mark Musaus

Mark Musaus is former Refuge Manager of the Loxahatchee NWR.

[Read more](#)



Elinor Williams

Elinor Williams currently serves as president of Friends of the Arthur R. Marshall Loxahatchee National Wildlife Refuge in Palm Beach County, Florida.

[Read more](#)

Share This Episode



Connect with VoiceAmerica

Download our mobile apps



Come see what **VoiceAmerica's** hosts are writing, on PressBlog!

