



Voltcast

Illuminating Leadership



Voltcast: Illuminating Leadership Archives Available
May 02nd 2017: Delivering Intentional Impact with an Executive Presence

Tune in

Archives Available on VoiceAmerica Variety Channel

[EPISODE ON DEMAND](#)

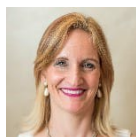
[VIEW HOST PAGE](#)

What type of experience do you want people to have? How you show up and perform matters. Your entrance, tone of voice, and even choice of words design an experience for others. As a leader, your presence carries the weight of cultivating a certain experience for employees and clients. How do you facilitate the type of experience you intend for them? Join Jennifer Owen-O'Quill today on Voltcast as she talks about designing an executive presence that will maximize results in challenging environments. Jennifer, along with her colleague, Jeff Smith, coaches CEOs and leaders on their executiv

[Read more](#)



Featured Guest



Jennifer Owen-O'Quill

Jennifer Owen-O'Quill, Leadership Director for Voltage Leadership Consulting, is an executive coach, facilitator, organizational consultant and leadership guru. With 25 years of leadership experience across a broad range of industries, she has coached leaders and their teams to execute institutional culture change through effective organizational management and leadership development. Some of Jennifer's clients include: Carilion Clinic, WDBJ-7, Fenway Sports Group, Novozymes Biologicals, Yokohama Tires, Canatal Steel, Polymer Solutions, Interactive Achievement, Corvesta and the Roanoke Regional Chamber of Commerce. Not-for-profit clients include Washington and Lee University, Goodwill In

[Read more](#)

Share This Episode



Connect with VoiceAmerica

Download our mobile apps

